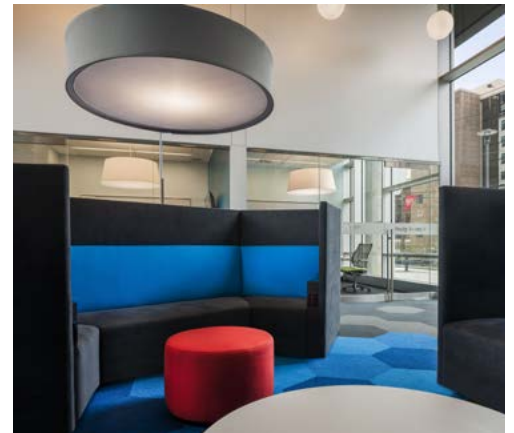


# The View at Montgomery

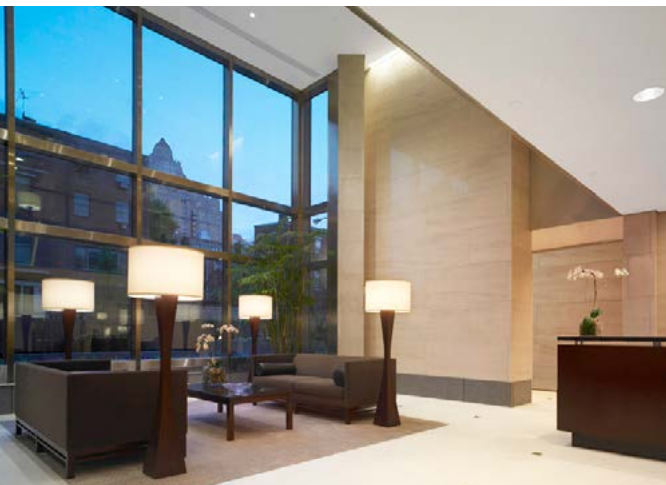
The View at Montgomery is an innovative mixed-use apartment complex at the site of the former John Wanamaker School. This 14-story student housing building at Temple University's main campus features 238 units, street-level retail, and sustainable storm water management. With best-in-class retail tenants including Chipotle, Potbelly, Blaze Pizza and Crisp, The View has re-energized one of Temple University's most active campus streets and has become a hub for the Temple University community. The project received the Urban Land Institute's (ULI) prestigious Award for Excellence, which recognizes top projects completed within the last five years by ULI members and non-members throughout Eastern and Central PA, NJ and DE.

While the building was highly successful and fully-leased before its completion, the developer, The Goldenberg Group, had even higher aspirations for the facility. DDI was commissioned to reposition the building and create a new design that would bring a "wow" factor, increase utilization and activate the public spaces, and act as a positive differentiator for the property against the competition. Recognizing the need to re-plan and repurpose the large open lobby space, the DDI design team drew on a combination of their workplace and hospitality experience designing for millennials and created a plan incorporating smaller, more private, collaborative huddle and study areas.



# 1706 Rittenhouse Apartments

From the double-height lobby and private elevator foyer to the perfect, 4,000-square-foot layouts, the interiors will reflect the intimacy and urban lifestyles of the families living at 1706 Rittenhouse. The tower's open layout, with only two small columns visible on any level, allowed DDI to offer a multitude of planning options for the full-floor dwellings, and exceptional flexibility in the placement of furnishings and other design enhancements. The interior design seamlessly blends modern trends of kitchens and baths with traditional elements in an eye-pleasing neutral palette. Regardless of layout, attention is paid to preserving the units' 360-degree views and bright, sophisticated urban feel.



# Murano Condominiums

**DAROFFDESIGN**

DDI was retained to provide interior design for the Murano Condominiums. This striking curved glass tower rises 42 stories on the Market Street corridor to 30th Street Station, creating residential use on this previously commercial avenue. Each floor plate is 11,200 SF, offering a selection of unique one, two, and three-bedroom residences with floor-to-ceiling windows, many with curved glass, and loft-like spacious living areas with open kitchens, panoramic views and amenities found in premier luxury hotels.

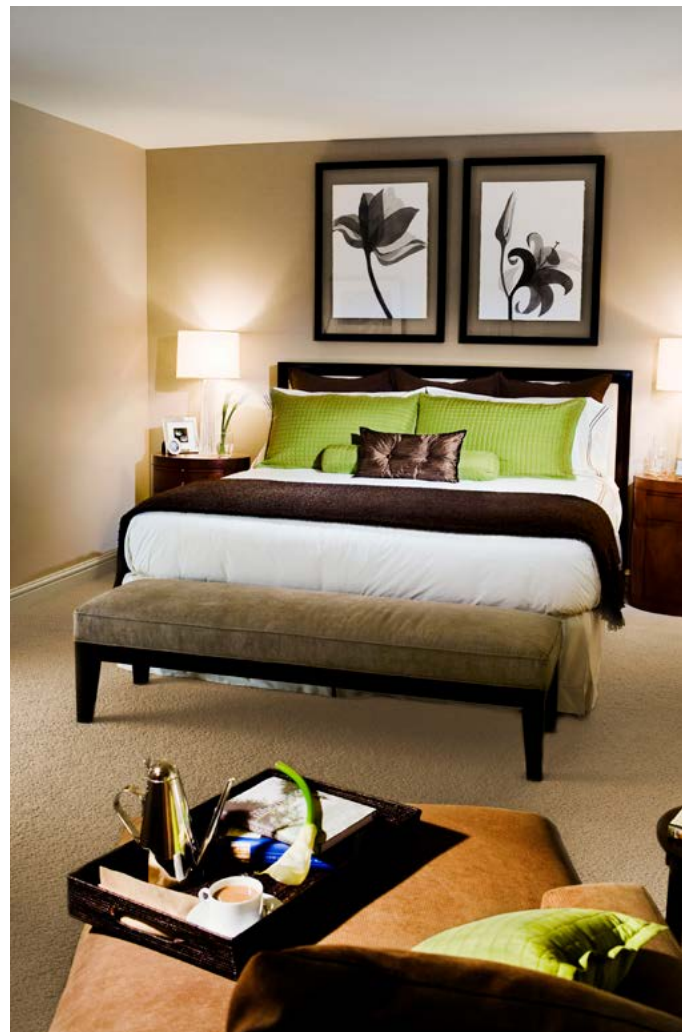
Working in collaboration with the building architect, DDI was responsible for the interior design of the ground-floor residential lobby, the refinement of the apartment plans, material selections and finish palettes for the units, the design of all the kitchens and bathrooms with high-end appliances and fixtures, as well as the sixth-floor pool, hospitality room, and the Murano sales center located in the lobby of One Commerce Square.



# Parc Rittenhouse

**DAROFFDESIGN**

DDI was retained to provide interior design renovation of this 1920's-era former office tower into the Parc Rittenhouse Condominiums and Club. On a fast-track schedule, DDI was asked to create the lobby and amenity spaces in the spirit of Brown's Hotel London. DDI was also responsible for the planning of 244 condominium units including kitchens, bathrooms, and furnished sample apartments in the tower. The overriding design direction from the development team was to create a property overlooking Rittenhouse Square that was evocative of some of London's finest hotels and private clubs, creating a sophisticated, luxury residential experience. Due to its preeminent location and the success of the design, this property is considered to be one of the premiere luxury Philadelphia condominiums.



# Ritz-Carlton St. Thomas

**DAROFFDESIGN**

DDI completed a custom design package for the interior renovation of The Ritz-Carlton Club, St. Thomas in the U.S. Virgin Islands. DDI's scope included the ownership residences as well as a new member's lounge and reception building. Colors, textures and artwork were all selected to reinforce the island experience. This tropical color scheme includes sheer draperies that open to reveal the windows and sliding glass doors to the patios with stunning ocean views. DDI's custom-designed hardwood furniture package, inspired by plantation-style antiques, was produced in Indonesia from recycled hardwood planks.

